

# AIRCLEAN

YOUR AIR FILTER MANUFACTURER

P.O. BOX 147,  
MAIDSTONE, ME14 2LA.

TEL:01622 832777  
FAX:01622 832507

sales@airclean.co.uk www.airclean.co.uk

## Filter frames and Casings - Combination

### Absolute (HEPA) Front Withdrawal Casings

These consist of a knife-edged sheet steel casing with 4 removable M8 fixing clips to clamp the HEPA filter in place manufactured in 1.5mm Zintec, finished with Black Etch Primer or Powder Coated.



### Absolute (HEPA) Side Withdrawal Casings

These consist of a flanged powder coated steel casing with a steel frame fitted internally and sealed into the casing.

Flanges are normally provided undrilled and will be 40mm unless otherwise specified.

Access doors are provided on one or both sides as required by the design. Casings will be finished in Black Etch Primer or a Grey painted finish

### SIDE WITHDRAWAL CASES-

1.5mm Zintec finished in Silver Grey Paint  
40mm External sheet metal flanges  
Access Doors on both sides of unit  
Max face size of Filter 609 x 609

**Extras:** Casing can be supplied fitted with pressure differential switches and/or manometers if required.

Filter Combinations	No. of Doors Each side + Width	Max Airflow m3/s	Pressure Drop Pa	Unit Length mm
4" G4 Panel Filter	1 x 274	1.09	87	380
12" F5 Bag Filter	1 x 274	0.94	63	525
4" G4 Panel + 30" F8 Bag Filter	2 x 419	1.1	225	1182
12" F5 Bag Filter + 12" X Duty Carbon	1x274+1x419	0.54	175	877
12" F5 Bag Filter + 24" X Duty Carbon	1x274+1x724	1.06	300	1182
6" H13 HEPA	1 x 274	0.35	280	380
12" H13 HEPA	1 x 419	0.75	280	525
4" G4 Panel Filter + 12" H13 HEPA	1x274+1x419	0.47	270	877
12" G4 Panel Filter + 12" H13 HEPA	1x274+1x419	0.47	270	1022
12" F5 Bag Filter + 12" X Duty Carbon + 12" H10 HEPA	3x419	0.54	370	1519
12" F5 Bag Filter + 24" X Duty Carbon + 12" H10 HEPA	2x419+1x724	0.94	520	1824
2" Grease + 12" F5 Bag Filter + 24" X Duty Carbon	1x274+1x724	0.94	300	1182

# AIRCLEAN

YOUR AIR FILTER MANUFACTURER

P.O. BOX 147,  
MAIDSTONE, ME14 2LA.

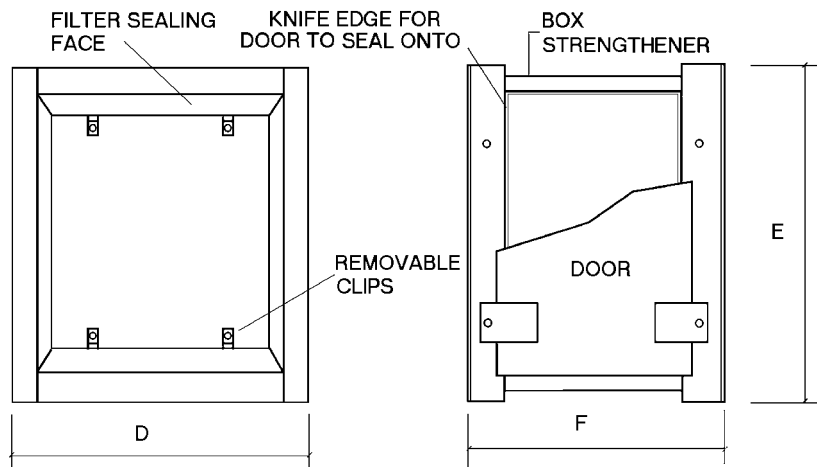
TEL:01622 832777  
FAX:01622 832507

sales@airclean.co.uk www.airclean.co.uk

Notes: Standard Door dimensions( opening dimensions) 274 ( 252) , 419 ( 397) , 724 ( 702)mm

End door posts are 64mm and central posts are 100mm

## SIDE ACCESS CASE

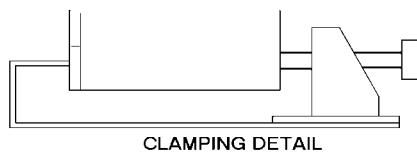
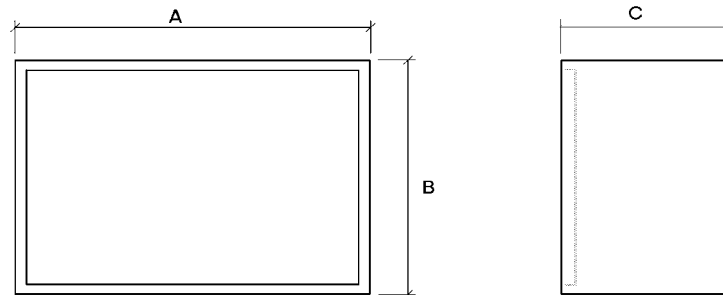


## FRONT WITHDRAWAL FRAME

### Dimensions

A = Filter width plus 14mm  
B = Filter height plus 14mm  
D = Filter width plus 90mm  
E = Filter height plus 90mm

Filter Depth	C	F
292mm	350mm	525mm
146mm	206mm	380mm
75mm	133mm	380mm



The Company reserves the right to change specifications without notice. E&OE