

DISPOSABLE SYNTHETIC MEDIA FILTERS Grade G3 to EN779:2012

Applications

The disposable Synthetic Panel Air Filter is a medium efficiency filter suitable for ventilation and air conditioning systems, providing an improved performance over the fibre glass panel air filter.

The construction of the synthetic panel air filter makes it less liable to shed fibres than a fibre glass panel filter, and therefore suitable for installations such as the food industry and hospitals.



Description

Synthetic Panel Air Filters consist of a dry, graduated, high loft and fully flame retardant synthetic fibre filter media, housed in either a rigid all-cardboard casing, or a cardboard frame with perforated cap-punch grids. Panel Filter Stiffening bars can be provided if required.

Our method of manufacture for panel air filters utilise modern hot-melt adhesive techniques, which produce an extremely rigid and robust product.

Technical

The media is Flame Retardant to DIN53438
 Max Operating Temp 100 Deg C
 Dust Holding Capacity 844 g/m²
 Recommended Face Velocity 2.25m/s
 Nominal to Actual Size: less 6mm on H & W, 3mm on Depth

STANDARD SYNTHETIC PANEL FILTER SIZES

Size		Flow Rate	Part Numbers	
OT Inches	Actual mm	m ³ /s	1" (22mm)	2" (47mm)
10 x 10	242 x 242	0.13	1120101	1120201
12 x 12	289 x 289	0.19	1120102	1120202
15 x 15	369 x 369	0.31	1120103	1120203
18 x 18	445 x 445	0.44	1120104	1120204
20 x 10	495 x 242	0.27	1120106	1120206
20 x 16	495 x 394	0.43	1120108	1120208
20 x 20	495 x 495	0.55	1120110	1120210
25 x 16	620 x 394	0.55	1120111	1120211
25 x 20	620 x 495	0.69	1120112	1120212
24 x 12	594 x 289	0.39	1120113	1120213
24 x 20	594 x 495	0.66	1120114	1120214
24 x 24	594 x 594	0.79	1120115	1120215

Notes

- * Actual sized filters will be manufactured as ordered +/- 3mm
- * Clean Pressure Drops 1"- 66Pa, 2"- 75Pa based on a Face Velocity of 2.25 m/s
- * Max Size: 625Hx900W

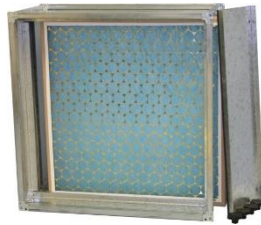
Holding Frames and Cases

Holding frames and casings for Disposable Synthetic Panels are available singularly or in multiples, and can be manufactured to suit non-standard sizes and special applications.

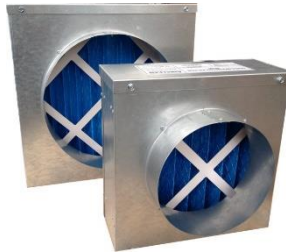
See Catalogue Section 8 (code AC8) for full information.



Front Withdrawal Frame
(1810)



MEZ Flanged Side Access
Housing (1820)



Duct Mounted Filter Housing
(1825)



Fully Welded Side Withdrawal
Filter Housing (1840)