

Metal Washable Panel Filter **Grade G2 to EN779:2012**

Applications

The Metal Washable Panel Air Filter is a coarse filter suitable for ventilation and air conditioning systems, where cleanability is required and low efficiency filtration can be accepted.

This washable air filter is suitable for use at higher air velocities, and hence when dealing with large air volumes. The metal washable panel filter is non-combustible and is therefore especially suited to applications where fire is a potential hazard.



Description

The air filtration media is crimped galvanised knitted wire mesh, which is enclosed in either an aluminium or galvanised channel frame.

Galvanised retaining wire meshes are fitted on both sides of this panel filter, and corner gussets provide rigidity.

All stainless steel metal washable air filters are also available in a gridmesh style filter or alternatively panels with galvanised media with stainless steel frames, to offer a long lasting product resistant to harsh atmospheres.

Technical

Face Velocity 3 m/s

Nominal to Actual size: less 6mm on H & W and 3mm on Depth

METAL WASHABLE FILTERS STANDARD SIZES

Size		Flow Rate m ³ /s	Filter Depth	
OT Inches	Actual mm		1" (22mm) Part No	2" (47mm) Part No
10 x 10	242 x 242	0.12	1220101	1220201
12 x 12	289 x 289	0.18	1220102	1220202
15 x 15	369 x 369	0.28	1220103	1220203
18 x 18	445 x 445	0.41	1220104	1220204
20 x 10	495 x 242	0.25	1220106	1220206
20 x 16	495 x 394	0.40	1220108	1220208
20 x 20	495 x 495	0.50	1220110	1220210
25 x 16	620 x 394	0.50	1220111	1220211
25 x 20	620 x 495	0.63	1220112	1220212
24 x 12	594 x 289	0.36	1220113	1220213
24 x 20	594 x 495	0.61	1220114	1220214
24 x 24	594 x 594	0.73	1220115	1220215

Notes

- * Actual sized filters will be manufactured as ordered. +/- 3mm
- * Galvanised Steel channel /mesh facias as standard
- * Pressure Drops 1" – 18 Pa; 2" – 20Pa at rated airflows (Face Velocity 2 m/s)

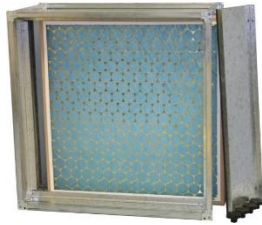
Holding Frames and Cases

Holding frames and casings for Metal Washable Panel Filters are available singularly or in multiples, and can be manufactured to suit non-standard sizes and special applications.

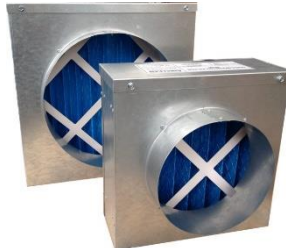
See Catalogue Section 8 (code AC8) for full information.



Front Withdrawal
Frame (1810)



MEZ Flanged Side
Access Housing (1820)



Duct Mounted Filter
Housing (1825)



Fully Welded Side
Withdrawal Filter Housing
(1840)