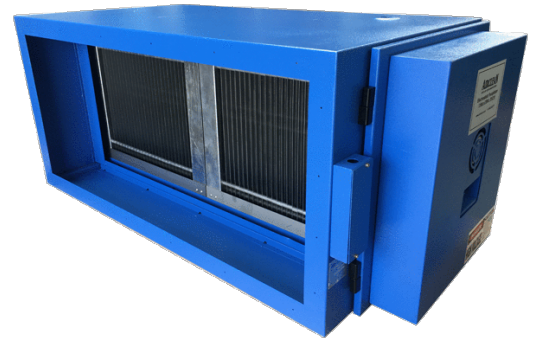


ELECTROSTATIC PRECIPITATOR Kitchen Grease and Smoke Particle Removal

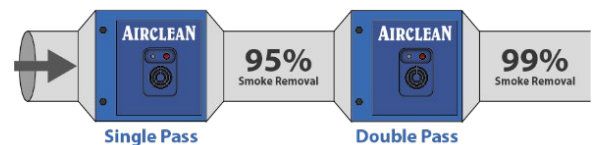
- Filter system for the removal of grease and smoke
- Cleanable Filter system and grease drainage
- Modular System to suit low - high air volumes
- Can remove up to 99% of grease and smoke






Applications

The Airclean **Electrostatic Precipitator (ESP)** can be used in kitchen extract systems or industrial applications for the efficient removal of grease, smoke, and airbourne oil / coolant mist.

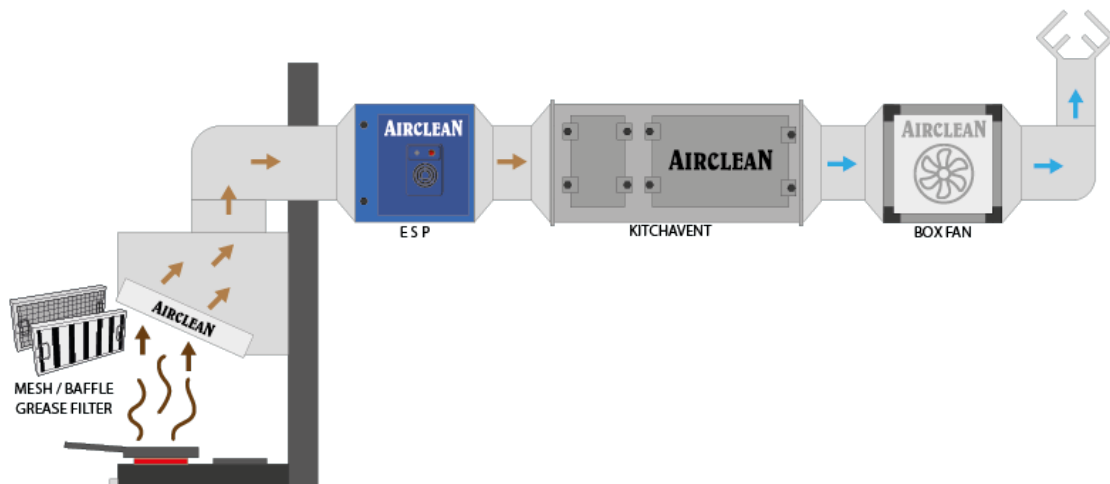
A single pass ESP will achieve a grease and smoke removal efficiency of 95% at rated airflow. Where efficiency is critical (eg. Low level kitchen extract) a double pass ESP is recommended to achieve a 99% efficiency. Running at max capacity will result in drop of efficiency to 85%



Sizing Options

1H x 1W	1H x 2W	1H x 3W
		
540 x 694 x 620mm Rated: Up to 0.69 m ³ /s Max Capacity: 1.27 m ³ /s	540 x 1243 x 620mm Rated: 0.69 – 1.36 m ³ /s Max Capacity: 2.55 m ³ /s	540 x 1790 x 620mm Rated: 1.36 – 2.08 m ³ /s Max Capacity: 3.83 m ³ /s

Positioning and Mounting



Description

The Airclean **Electrostatic Precipitator** is manufactured from 1.5mm Galvanised Steel and finished with an Epoxy Powder Coat. The two metal washable filters within the ESP are manufactured with an aluminium frame and an aluminium knitted mesh filter pad.

The Ioniser and Collector in the unit are combined in a single aluminium cell, which can be removed to be cleaned and replaced as required by the operator.

Technical

Power: 220V, 50Hz, Single Phase

Controls: Auto cut off switch when door is open. Fault indicator and operation lights.

Maximum recommended face velocity: 2.5m/s

Maximum operating temperature: 60°C

For high grease / oil applications drainage is required. A minimum of 150mm below the unit should be allowed for a suitable drainage system to be installed.

To treat airflows larger than those stated, multiple units are used together in parallel. An ESP joining kit is required to connect drains and flanges for ducting.

Units are to be mounted horizontally only, with access one side only. ESP's can be handed with airflow left to right, or right to left.

ELECTROSTATIC PRECIPITATORS

Dimensions			Style	Weight	Flow Rate	Max Capacity*	P.D.	Part Numbers
H	W	D			m ³ /s		Pa	
540	694	620	1Hx1W	55kg	Up to 0.69	1.27	80	1912125
540	1243	620	1Hx2W	80kg	0.69 – 1.36	2.55	80	1912126
540	1790	620	1Hx3W	120kg	1.36 – 2.08	3.83	80	1912127

**Running at max capacity will result in drop of efficiency to 85%*