

**O & M INSTRUCTION  
PRODUCT GROUP 18411  
NOX FILTER SYSTEM**

**Scope**

The NOX Filtration Unit is designed to remove Outdoor air pollutants including Particulate Matter and Nitrogen Dioxide from outdoor air being drawn into buildings through mechanical ventilation.

The NOX Filter System should be positioned and fitted in the supply air ductwork on either the positive or negative pressure side of the fan.

Air Filters will require changing, so consideration to access panels and installation space should be made.

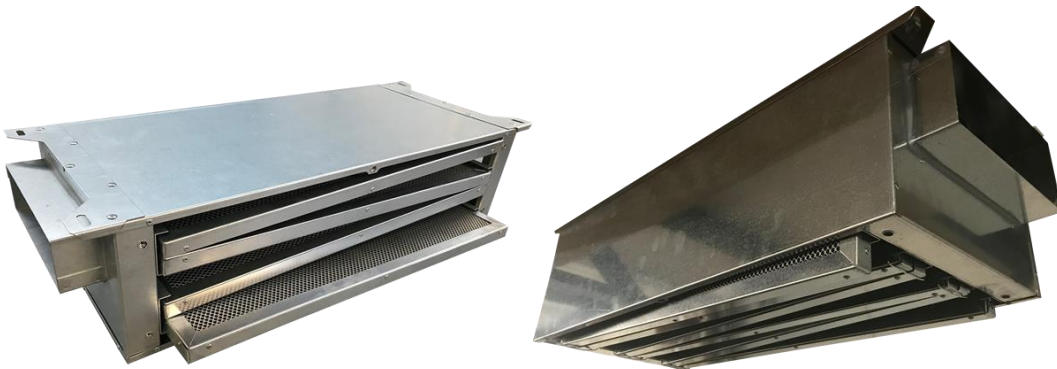
**General**

The lift off doors are held in position by cap head threaded bolts M6, which are conventionally threaded. An Allen Key / Hex Key will be required for the removal of the doors.

NOX Filtration Units accommodate Gas Filters fitted within slide rails.

Withdraw and dispose of the dirty filter(s), and replace with new.

The access door also seals the filter unit from air leaks and by pass of the filters and must be fitted securely using all fixing cap head threaded bolts provided.



NOX Filtration Units: Side Access (left) and Bottom Access (right)  
with door panel removed to allow filters to be removed.

## Safety

Installation of the NOX Filtration System should be carried out by a trained engineer.

It is recommended that industrial gloves, overalls, eye protection and nuisance dust masks are utilised when changing filters which have been subjected to natural air, as opposed to air drawn from processes, where full risk assessments should be performed prior to changing. For some filter locations, an assessment regarding manual handling will need to be made, for example where ladders are required, or they are installed above shoulder height.

Changing of filters should be carried out by experienced or trained personnel, in accordance with safety requirements as defined by the "Control of Substances Hazardous to Health" (COSHH) Regulations. ie. Someone who fully understands the design, operation and implications of the product and its use.

### For Bottom Access Units

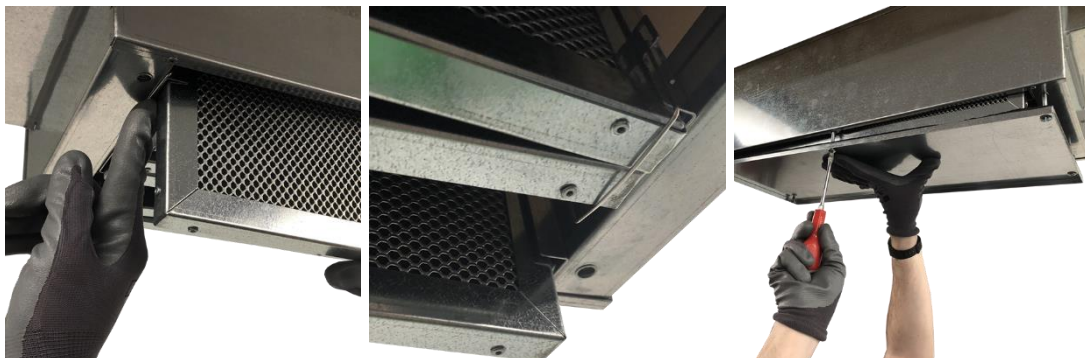


For bottom access NOX Filter Units there is a risk of the filters falling on the operator when removing the door. Additional care must be taken when removing the door.

When replacing the filters, push the holding clips out of the way to slide the filters in and out of the unit.

Before securing the access door, ensure holding clips are in the correct position with one clip holding the outer filters, and two clips holding the inner filters.

The filters will hang out the bottom of the unit, securing the door will push them up into position.



## **Gas Filters**

Gas Filters are of a metal construction and contain a unique carbon / chemical blend designed to remove pollutant gases. The gas filters offer a maximum life expectancy of 2 years, but this can vary depending upon pollution concentrations being drawn through the filters.

To determine an accurate life expectancy of gas filters we offer a filter analysis service.

Following an installation period between three months and one year, a sample panel from an IAQ Filtration System should be removed and returned for analysis. Following testing, an accurate estimate of when the filters should be changed can be provided.

Contact Airclean to discuss this service further.

## **Disposal of Air Filters Including Personal Protective Equipment**

- Filters and PPE which has been damaged prior to use can be disposed of as normal domestic / industrial waste.
- Filters and PPE soiled with exterior air can be disposed of as normal domestic / industrial waste.

For further information please contact Airclean Ltd